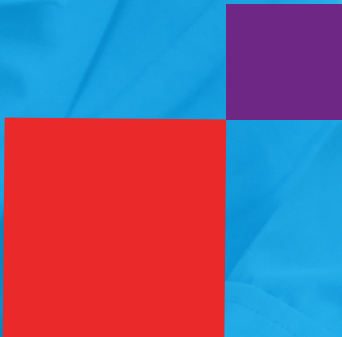
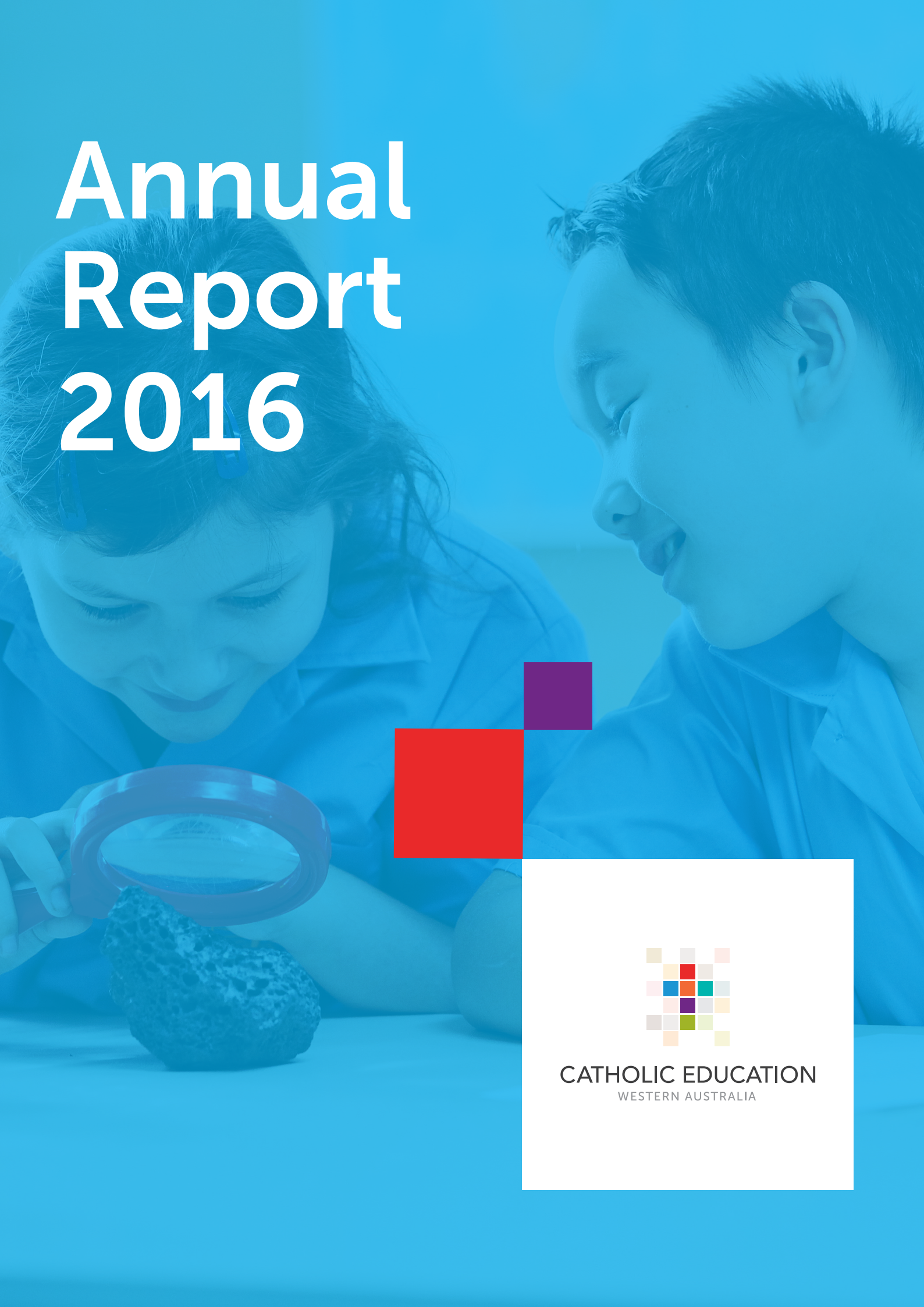


# Annual Report 2016



**CATHOLIC EDUCATION**  
WESTERN AUSTRALIA



# Contents

Letter to the Bishops of Western Australia	4
Commission Report	6
Executive Director's Report	11
About CEWA	12
LEADing in 2016	16
Appendix 1: Financial Summary 2016	22
Appendix 2: Enrolments 2016	26

# Letter to the Bishops of Western Australia

**The Most Reverend Timothy Costelloe SDB**  
**Chair, WA Conference of Bishops**  
Victoria Square Perth, WA 6000

Dear Brother Bishops

It is with great pleasure that I present the 2016 Annual Report of the Catholic Education Commission of Western Australia (CECWA) for the consideration of the Conference of Bishops of Western Australia.

In accordance with its Mandate from the Bishops, the Commission provides governance of Catholic Education Western Australia, acknowledging that Catholic schools represent an essential means through which the Church proclaims the Gospel of Jesus Christ. With a focus on the continuous development and improvement of Catholic schools across the state, the Commission assists and advises on matters pertaining to the strategic direction of the system of schools, evangelisation and religious education, stewardship and accountability.

In 2016, Catholic Education Western Australia had the privilege of hosting the National Catholic Education Commission Conference in Perth. The conference brought together approximately 1,400 educators, Church leaders, academics and policy makers from Australia and abroad to celebrate and share

successes in Catholic education, as well as to address the role of Catholic schools in a rapidly changing education landscape.

The review and subsequent restructure of the Commission's sub-committees has been a priority for Commission in 2016. With the intent of responding to the diversity and complexity of educational needs, CECWA convened five sub-committees to oversee, monitor and provide strategic system and policy direction.

Work commenced on the consultation and implementation of governance recommendations, with the risk management framework and code of conduct template for Catholic schools being a key focus in 2016.

Of particular interest to the Bishops is the ongoing work of the Commission in addressing faith formation in CEWA schools. In 2015, CEWA engaged a research agency to undertake wide ranging consultation to better understand the faith development needs and challenges of CEWA employees across the state. The research results were presented at the 2016 NCEC conference and have provided insights that have informed evangelisation planning processes and

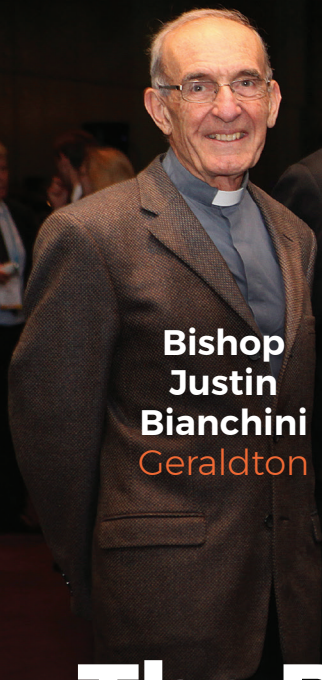
development of more formal programs to build capacity in our staff to work and lead in Catholic schools.

I commend our Commissioners for their leadership of CECWA and those on its sub-committees for their guidance and advice. I also acknowledge and thank Executive Director, Dr Tim McDonald, and the Executive of CEWA for their dedication and service to Catholic schools and communities. I congratulate all involved in providing a Catholic faith-centred education for children and young people in Western Australia for their efforts throughout 2016.

I am pleased that this report represents the vision and purpose of those who make up the Catholic education community in Western Australia, from the Commission through to teachers in the classroom. It is a tribute to the energetic and generous commitment to delivering truly faith-filled learning environments for all families who seek it.



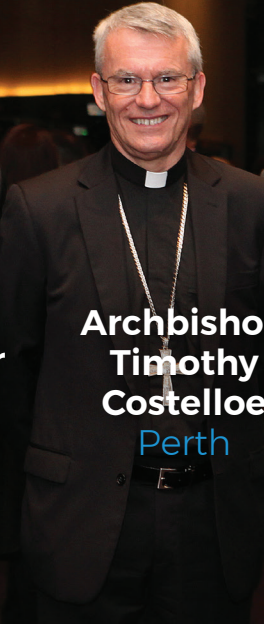
**MOST REV GERARD J HOLOHAN**  
Chair, Catholic Education  
Commission of Western Australia



**Bishop  
Justin  
Bianchini**  
Geraldton



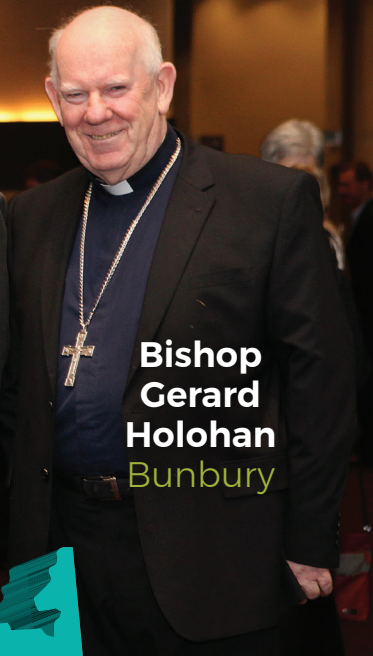
**Bishop  
Christopher  
Saunders**  
Broome



**Archbishop  
Timothy  
Costelloe**  
Perth

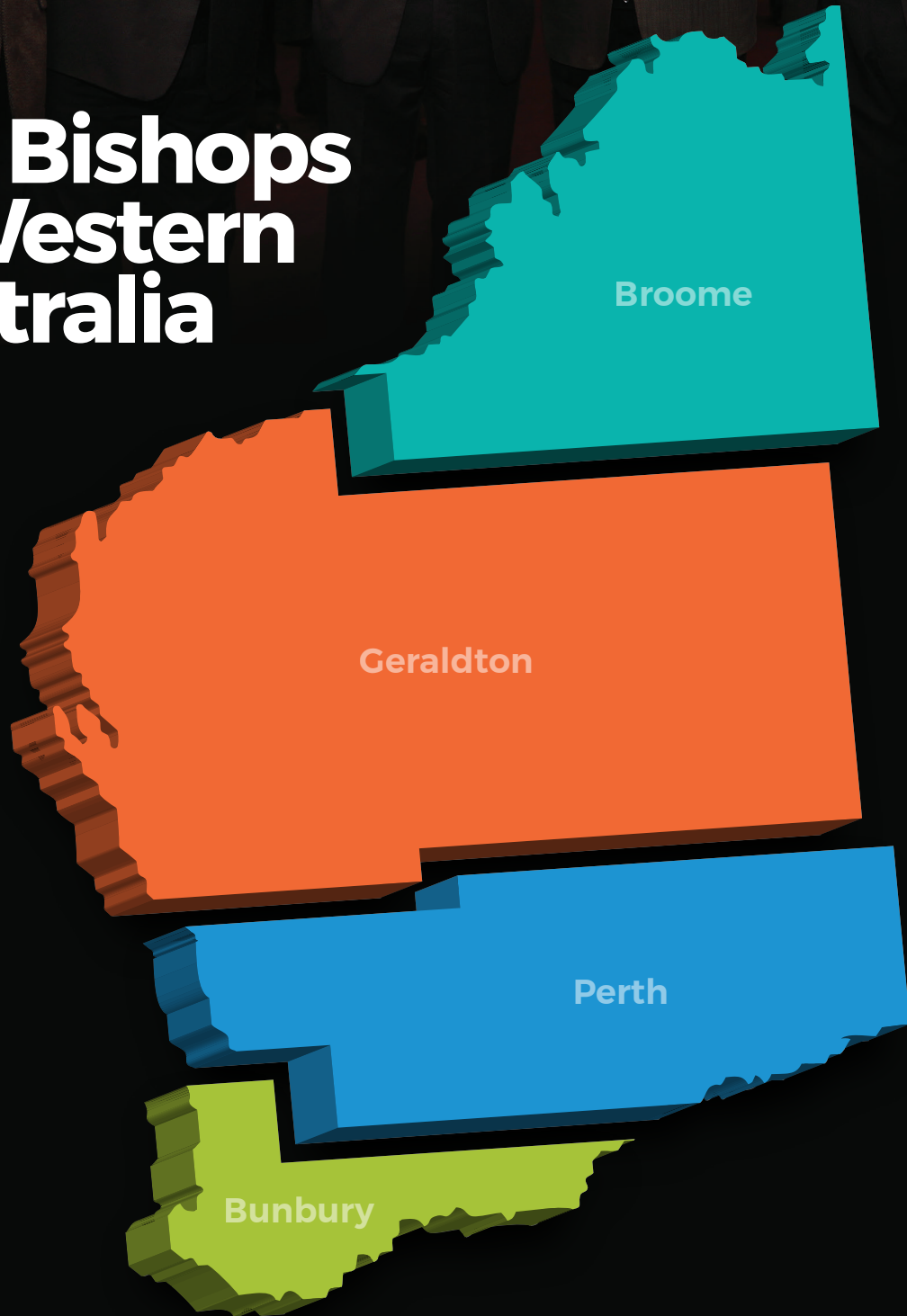


**Bishop  
Donald  
Sproxtton**  
Perth



**Bishop  
Gerard  
Holohan**  
Bunbury

# The Bishops of Western Australia



# Commission Report

## About the Commission

Representing the Archdiocese of Perth and the Dioceses of Broome, Bunbury and Geraldton, the Bishops of Western Australia are responsible for fostering the continuous development and improvement of Catholic schools in Western Australia.

In 1971 the Catholic Education Commission of Western Australia (CECWA) was established, and is mandated by the Bishops to set state-wide policies for Catholic schools and assist each Bishop in overseeing Catholic schools within their own diocese.

Commissioners of the Catholic Education Commission of Western Australia 2016:

- Bishop Gerard Holohan – Chair
- Dr Tim McDonald – Deputy Chair
- Dr Debra Sayce
- Bishop Don Sproxton
- Sr Marion Beard
- Br Kevin Paull
- Mr Wayne Bull
- Mrs Helen O’Toole
- Mrs Helen Anderson
- Mr Paul Rafferty
- Dr Chris Hackett
- Associate Professor Clive Walley – Chair Aboriginal Community Sub-Committee

- Fr Michael Morrissey – Chair Audit and Risk Sub-Committee
- Dr Joan Squelch – Chair Curriculum Sub-Committee
- Mrs Sonia Faccin Nolan – Chair Catholic Education Community Sub-Committee
- Professor Glenda Scully – Chair Finance Sub-Committee

## Standing Committees

In 2016, the Commission convened five sub-committees to advise and assist CECWA across the many diverse and important aspects of Catholic education. These sub-committees are the:

- Aboriginal Community Sub-Committee
- Audit and Risk Sub-Committee
- Catholic Education Community Sub-Committee
- Curriculum Sub-Committee, and
- Finance Sub-Committee.

The *Standing Orders for Sub-Committees of the Catholic Education Commission of Western Australia* contain information relevant for all sub-committees. Each sub-committee is tasked with overseeing, monitoring and providing strategic system and policy direction across its focus areas, in accordance with the priorities of the CECWA.

## Commission Resolutions 2016

### Governance and Administration

- The Commissioners considered the recommendations of the Governance Implementation Working Party on the review of CECWA Governance and Standing Committees and resolved that five sub-committees be convened.
- CECWA approved the establishment of the CEWA Policy Group, confirming that all policy will be directed by CECWA but policy development and management will be managed through the CEWA Policy Review Group.
- CECWA resolved that the revised *CECWA Policy Statement 2-C16 Debt Servicing Income and Assistance* be approved.
- CECWA approved the revised draft of the *CECWA Policy Statement 2-B3 Aboriginal Education*.
- CECWA approved the appointment of an independent research company to undertake research in to factors affecting school choice in Western Australia.

### School Developments, Improvements and Enrolment Extensions

Enrolment extensions were granted to the following schools:

- Ursula Frayne Catholic College, Victoria Park
- St Paul's Primary School, Karratha
- Irene McCormack Catholic College, Butler
- Emmanuel Catholic College, Success

CECWA recommended the re-amalgamation of Iona Presentation Primary School and Iona Presentation College, Mosman Park, to operate as a two stream primary, five stream secondary, Kindergarten to Year 12 College to the Archbishop of the Perth Archdiocese.

### Financial Administration

- CECWA resolved that the revised *CECWA Policy Statement 2-C16 Debt Servicing Income and Assistance* be approved.
- CECWA approved a range of projects recommended for funding from the Australian Government Capital Grants Program (AGCG) and the State Government Low Interest Loan Scheme (LILs), with Co-responsibility Building Fund and System Debt-Servicing

Assistance as required.

- Funding and in principle support for the development of an Early Childhood Education and Care Services (ECECS) business plan was approved by CECWA.
- CECWA approved the one-off support for schools with Kindergarten children on a Centrelink concession card, confirming that this support be available as a one-off in 2016 and 2017 only, to all schools in the system.
- CECWA approved recommendations on Aboriginal and Torres Strait Islander loading allocations for 2017.
- CECWA approved an update on the allocation of the distribution of the Students with Disability funding for 2017.
- CECWA approved NAPLAN expenses to be funded from the Australian Education Act Recurrent Funding (AEARF) Co-Responsibility Pool from 2017.
- The introduction of the the Equating program was approved for Year 3 BRLA so that system-wide data can be collected about student learning in Religious Education.
- CECWA resolved to support the Australian Religious Educators' Enrichment Program – Tantur Ecumenical Institute – sponsoring two Catholic school religious educators, one parish Catechist teacher and one member of the CECWA for 2017.

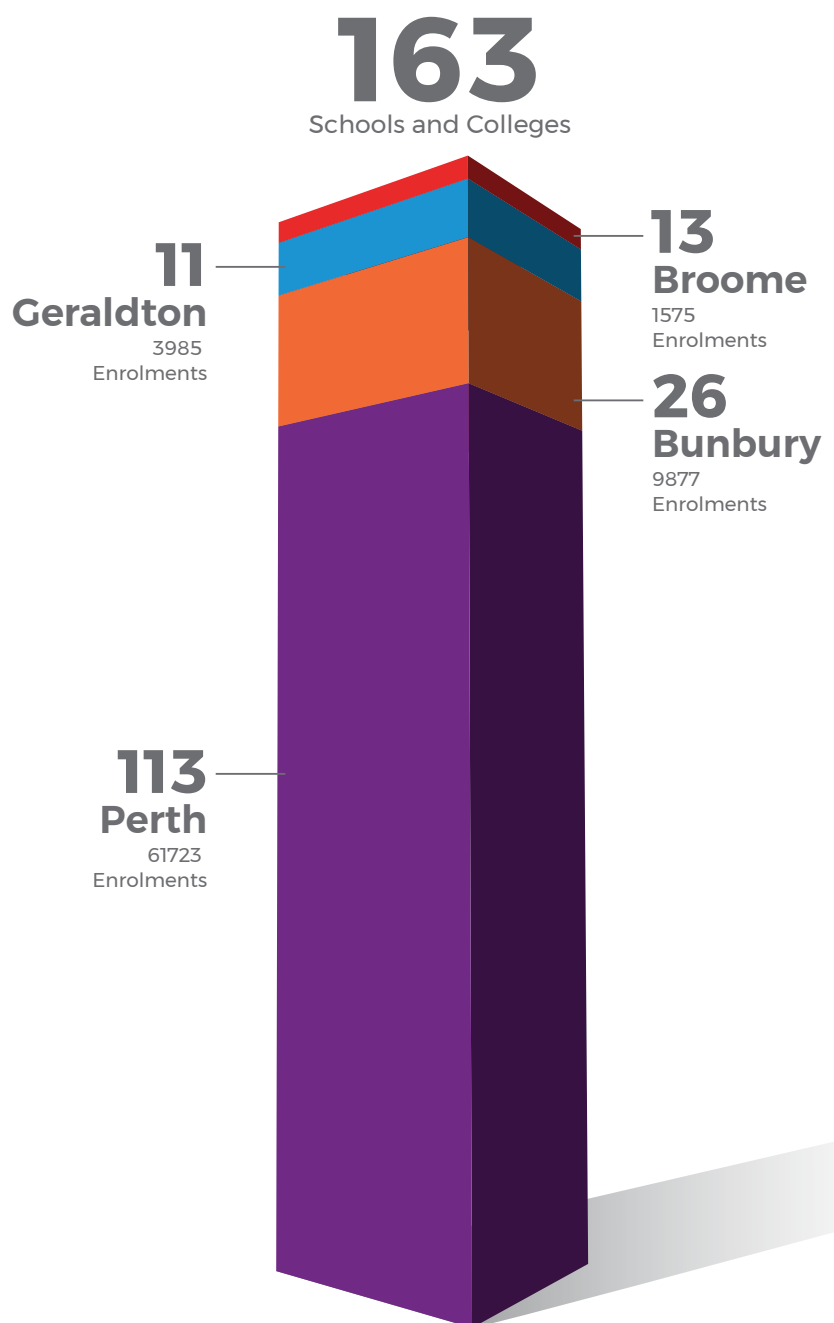
### Catholic Identity and Religious Education

- CECWA resolved that online testing be introduced to remote Catholic schools in the Broome Diocese in 2017 using Online Bishops' Literacy Assessment (BRLA).

# Commission Report continued...

## School and office locations

CEWA schools and colleges are located in each of the four West Australian Catholic Dioceses, as far north as Wyndham in the northern Kimberley region, to Albany and Esperance in the state's south. Seven CEWA schools in the Kimberley are the sole providers of formal education in their community.





## Principal appointments

<b>Perth</b>	15
<b>Bunbury</b>	6
<b>Broome</b>	4
<b>Geraldton</b>	2

## Participation in Catholic Education accreditation

Course/Module	Perth	Bunbury	Geraldton	Broome	Polycom
<b>Accreditation to teach in Catholic schools</b>	1,021	250	217	36	74
<b>Accreditation to work in Catholic Education</b>	576	95	123	101	0
<b>Accreditation to teach Religious Education</b>	118	6	8	0	0

## New schools, developments and improvements

### Perth

Whitford Catholic Primary School

Holy Cross College

Xavier Catholic School

St John Bosco College

St Maria Goretti's Catholic School

Queen of Apostles School

St Brigid's Primary School

St Munchin's Catholic School

Mercy College

St Joseph's School

Kolbe Catholic College

St Kieran Catholic Primary School

St John's School

Lumen Christi College

Prendiville Catholic College

St Lawrence Primary School

### Bunbury

St Joseph's Primary School

### Broome

Christ the King Catholic School



# Executive Director's Report

## *It is with great pleasure that I report on activities and progress of Catholic Education Western Australia for 2016.*

As Catholic Education Western Australia (CEWA) has continued to respond to a rapidly evolving education landscape, 2016 has proven to be a period of significant transformation. Building on the successes of our system of schools, as well as the talent, skills and expertise of exceptional professionals and leaders in our system, we have taken bold steps to advance a range of initiatives that support the strategic direction of CEWA, as well as working to deliver the best opportunities and outcomes available for families and young people across our state.

2016 was a year of exciting developments for CEWA. We sought to LEAD in the education landscape, not just locally but globally, with an innovative digital transformation commitment and design thinking partnership. We invested in identifying and strengthening leaders in a variety of roles across our system.

Uncertainty around government funding over the long term and the ever-changing place

of the Church in society have demanded that we consider how we can deliver excellent education for many years to come while being true to our mission.

This year we focussed our vision on four key areas: leadership development, early years learning and care, the health and wellbeing of students and staff, and educating at the margins of our society. These four areas aligned with our Learning, Engagement, Accountability, Discipleship (LEAD) strategy, and this report outlines how we sought to bring our best to these priorities.

We also continued to explore how Catholic schools can play a transformative role in the lives of all those who seek a Catholic education. Our digital transformation aims to support the principle of involving parents and family as the primary educators of our students, an important underpinning value in Catholic education. Our CARE (Curriculum and ReEngagement) schools are doing great work to provide opportunities for students who have found themselves marginalised in mainstream education.

We acknowledge that our system, and our schools, will only be

truly effective when our staff are passionate about learning, for their students and themselves. We have sought to invest meaningfully in the development of our people, with projects including our Leadership Charter, our faith formation research, and the Graduate Certificate in Catholic Leadership developed with the University of Notre Dame Australia, among others.

There is already promise that the work of CEWA in recent years is paying off, with our students' learning outcomes translating to improving results in many areas, as you will witness in this report.

We will continue to reflect on our mission and strategic direction as we seek to transform learning for all, supported by increasing digital connectivity and data-informed decision making.

I am confident that we will see our system providing a growing variety of opportunities for meaningful learning and faith formation into 2017 and beyond, supporting each and every student to flourish.



**DR TIM MCDONALD**

Executive Director  
Catholic Education Western

# About CEWA

## Vision, values and mission

CEWA is a state-wide system, comprising 163 schools and colleges from as far north as Wyndham in the northern Kimberley region, to Albany and Esperance in the state's south. Seven CEWA schools in the Kimberley are the sole providers of formal education in their community. CEWA schools are located in each of the four West Australian Catholic Dioceses.

Our vision statement sums up our purpose as an education system:

***Welcoming all, Catholic Education Western Australia transforms lives by inspiring a passion for learning and discovery, through a closer relationship with Jesus Christ***

Our schools partner with parents, carers and families to deliver learning environments and opportunities where every student can flourish – intellectually, spiritually, religiously, socially, physically and emotionally.

CEWA schools and colleges share in the life and mission of the Church in their parishes and diocese. Catholic students are

supported to grow in their faith and participate in the sacraments, and all students benefit from a strong focus on pastoral care and Gospel values.

Our schools strive to empower each and every student with the skills, knowledge and values to live rich and meaningful lives in a rapidly changing and interconnected world.

## Strategic Direction

LEAD defines our strategic direction – all of the work of CEWA schools can be viewed through the lens of Learning, Engagement, Accountability and Discipleship.

- Learning is what we do. We are committed to learning at every level, for students, staff and school families alike.
- Engagement is essential. We are committed to our mission through positive relationships with all.
- Accountability is not optional. We have personal and collective responsibility for our system's success.
- Discipleship is our calling. We are committed to deepening our relationship with Jesus.

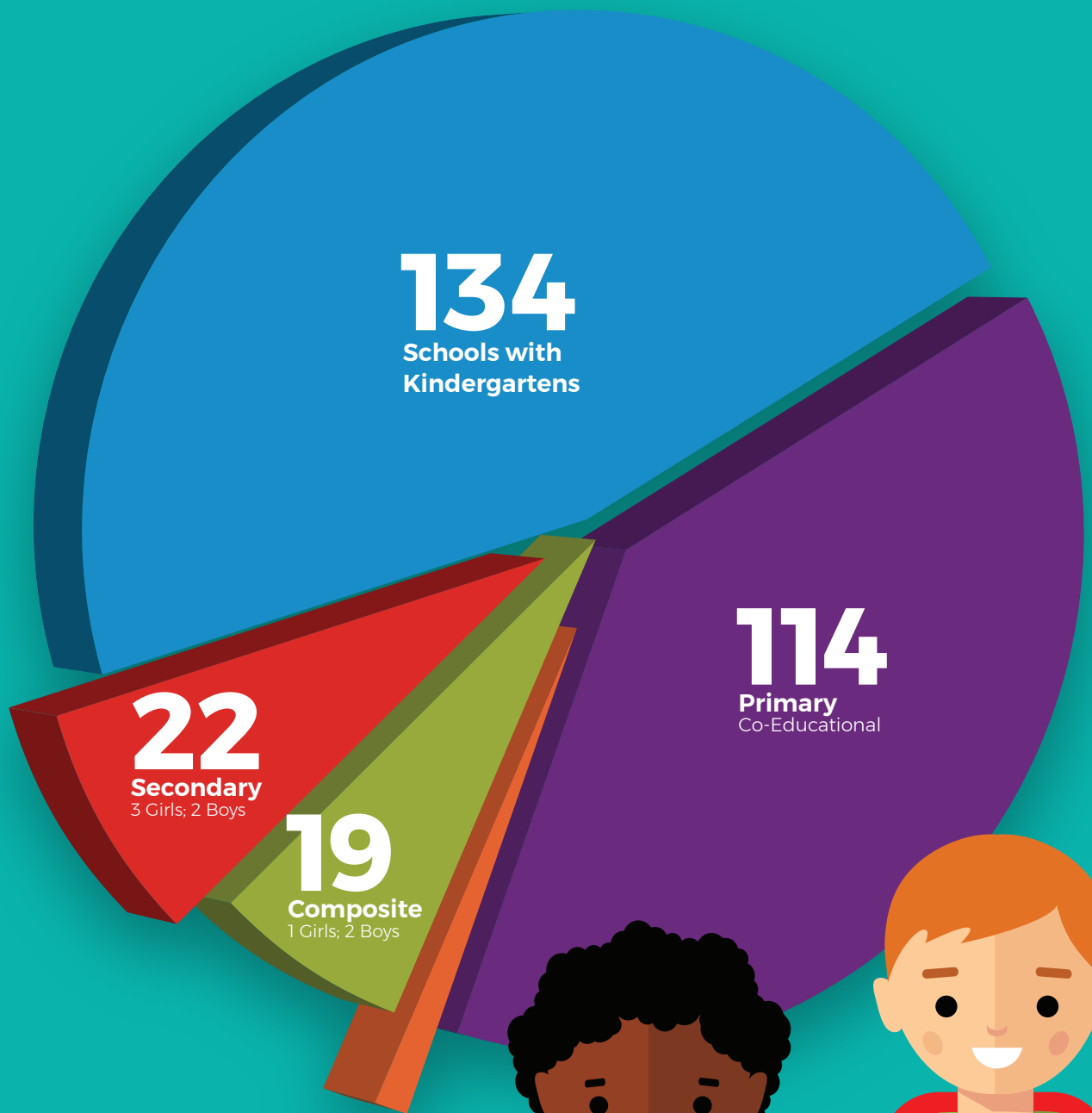
## Organisational structure

An executive and administrative staff connects CECWA to the schools and colleges of our system, and provides support and development services to schools and educators.

CEWA administrative staff and consultants are based at the Catholic Education Centre in Leederville, and regional offices in the Broome, Bunbury and Geraldton dioceses. Student Services consultants are also based at a number of school offices around the Perth metropolitan area.

The CEWA Executive Team consists of:

- **Dr Tim McDonald – Executive Director of Catholic Education**
- **Dr Debra Sayce – Director Religious Education**
- **Gabrielle Doyle – Director Teaching and Learning**
- **Dr Tony Curry – Director School Improvement**
- **Donna O'Hara – Director Community Engagement and Employee Services**
- **Gerry Doyle – Director Finance, Planning and School Resources**
- **Dr Edward Simons – Director Governance and Administrative Services**

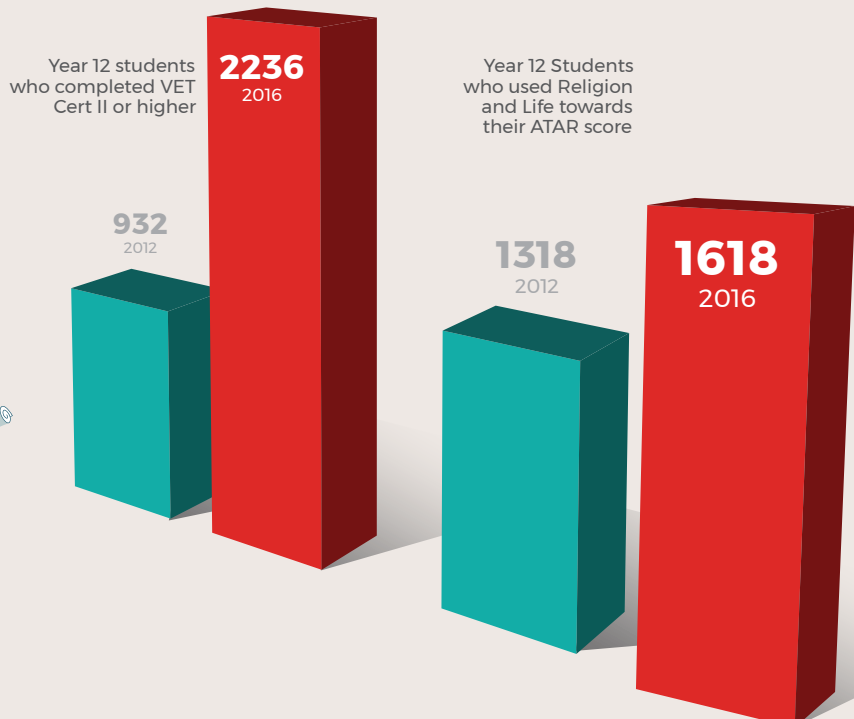
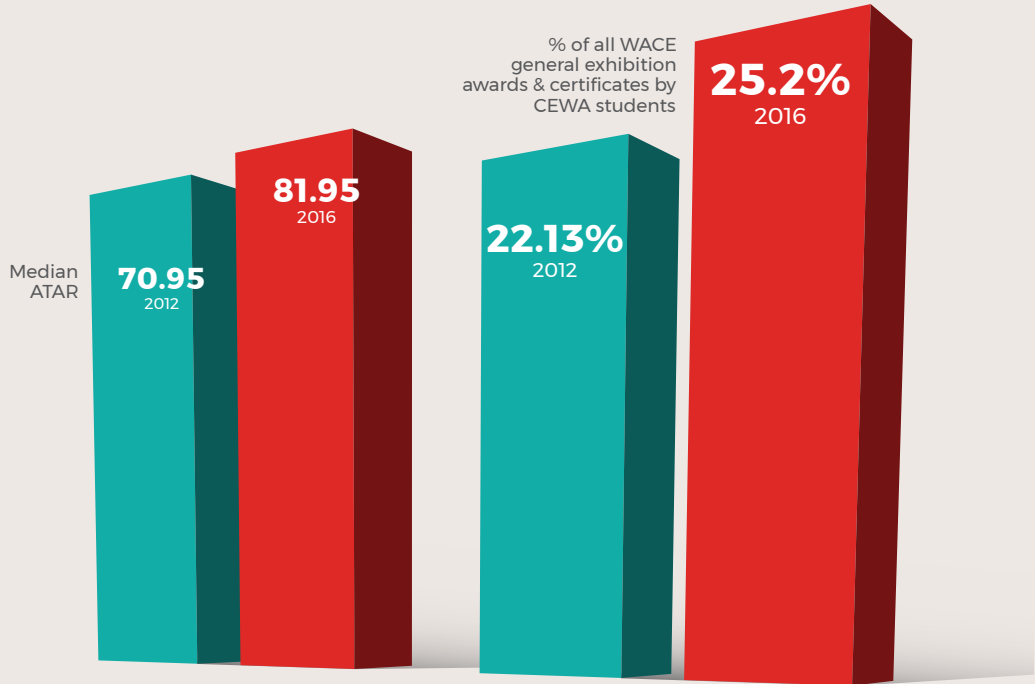


**4**  
CARE  
Schools



# Student Outcomes

## WACE Results 2016



## Bishops' Religious Literacy Assessment

Overall Student Performance for 2016

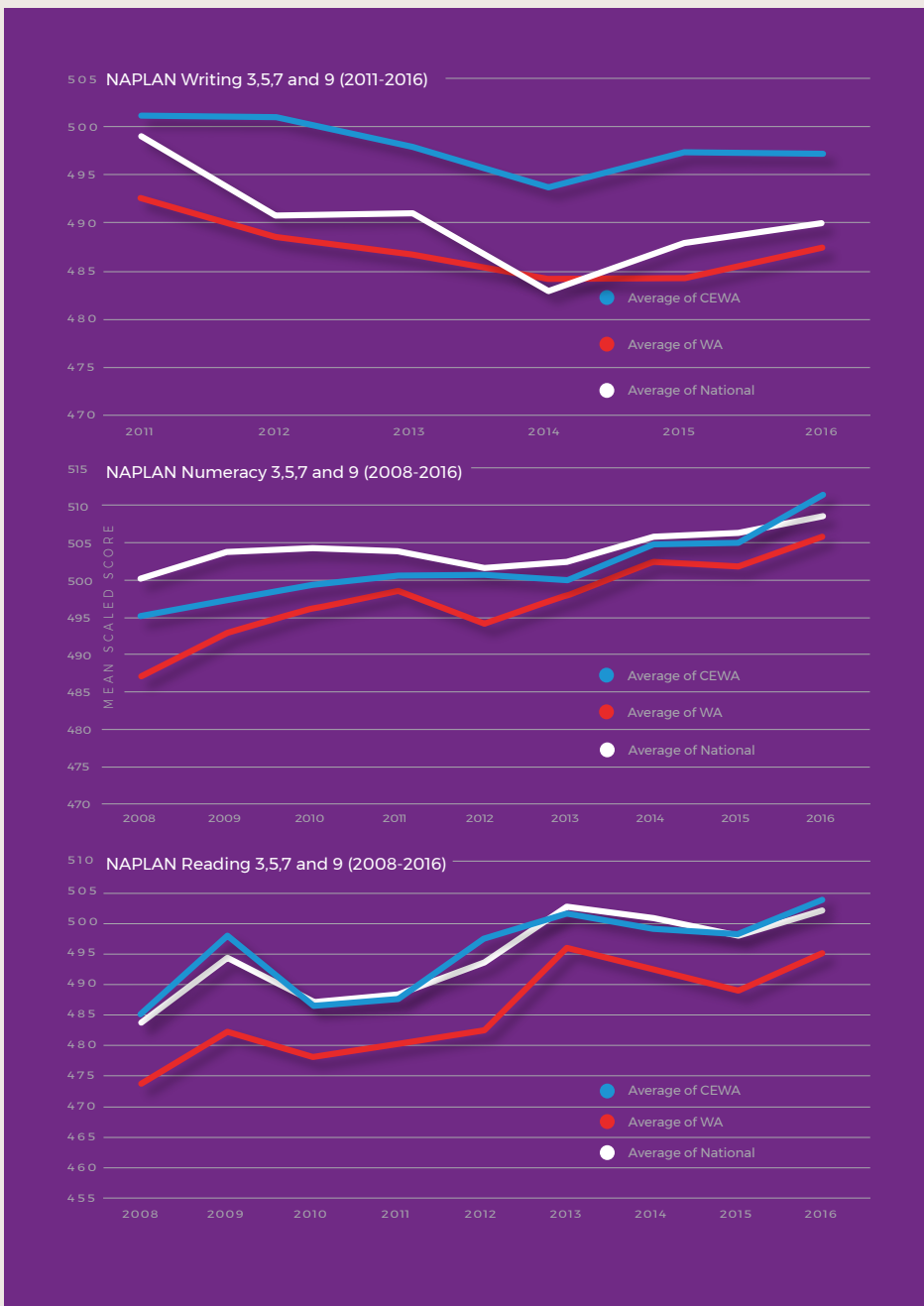
Year 3 - **68%**

Year 5 - **60%**

Year 9 - **53%**

Student Participation - **98%**

## NAPLAN Results 2008-2016



# LEADing in 2016

## LEADing Lights

CEWA embarked on a significant system-wide digital transformation in 2016, LEADing Lights. This transformation is a multi-stage process, which will support us to move forward as an interconnected learning community in which students, staff and school families can learn and collaborate in new ways, without the traditional limitations of geographic distances or isolation.

*LEADing Lights is equipping all of our schools and colleges with 21st century technologies and tools for learning, and ensuring more equitable access across our vast state.*

LEADing Lights is relevant to the work of every CEWA staff member; this digital transformation will benefit all with better resources and simplified connection.

This year the scope and goals of the LEADing Lights project were finalised, and the first stages were rolled out. Much work was done on consulting with school leaders around their needs for a single sign on digital ecosystem, and communicating the project outline and aims to school communities.

A partnership with Microsoft was established to build the CEWA 365 Portal, and world-leading digital learning platform, Claned, joined the project.

LEADing Lights will continue to be a major project in 2017, when school and office staff will experience many of the changes it will bring for the first time.

## Learning

*Our focus is on work that enhances student achievement and wellbeing. Our commitment has been to learning at every level, for students, staff and school families alike.*

### • Collaborative Project

CEWA's Collaborative Project continued through 2016, the second year of the ongoing initiative promoting school improvement through teaching and learning practices. Educators from Catholic schools across the state participated in the Collaborative Project, which was supported by internationally renowned education researcher and author Dr Lyn Sharratt, and facilitated by CEWA's Teaching and Learning Directorate.

Workshops in Perth and Geraldton with Dr Sharratt were held twice in 2016, with consultation facilitated via Skype outside of these times. The Collaborative Project enabled CEWA educators to focus on how data and evidence can inform instruction and assessment to achieve better learning outcomes for students. The schools and educators involved in the Collaborative Project will be sharing their learnings more widely across the system moving forward.

### • Salvado Catholic College opening

Salvado Catholic College opened in Byford at the beginning of Term One, 2016. The College welcomed students from Kindergarten to Year Two for its foundation year, and will expand over time to cater to students through to Year 12. Byford has seen significant population growth in recent years, and the establishment of Salvado Catholic College reflects CEWA's commitment to making a quality Catholic education available for all WA families. The College opened with nature play areas, open and bright teaching and learning spaces, administrative facilities and assembly space.



- **Religious Education Online Content Delivery**

In February 2016, CEWA launched the Religious Education Online Content Delivery platform. The platform allows teachers across the state and Catechists in the Perth Archdiocese to access a range of resources for Religious Education and faith formation, developed and recommended by CEWA's Faith Formation and Catechist Service Teams. The platform will be further developed in 2017 to integrate seamlessly into the suite of online tools available to CEWA staff through LEADing Lights.

- **Studio Curious**

In 2016 CEWA partnered with human-centred design agency, Knowledge Society, to create Studio Curious, a space and accompanying processes for innovation in contemporary education. Staff from across the CEWA system participated in the initial Studio Curious design-thinking program, prototyping potential solutions for challenges faced by schools, students and educators. The Studio Curious initiative reflected CEWA's commitment to building the capacity of its educators to adapt. Along with the LEADing Lights digital transformation, Studio Curious was a key

project in CEWA's strategy for developing teaching and learning environments able to prepare students for a rapidly changing future. The work with Knowledge Society will carry on in 2017.

- **Graduate Certificate in Catholic Leadership**

During 2016 CEWA worked with the University of Notre Dame Australia in the development of the Graduate Certificate in Catholic Leadership, to be offered by the University from Semester One 2017. The Certificate course has been designed to expand the capacity of leaders and aspiring leaders in Catholic organisations, with leadership and management principles based on Gospel values and Catholic social teaching. The development opportunities available to CEWA staff through the Certificate promise to build the effectiveness of schools as learning organisations and communities of faith formation.

- **Gathered in My Name**

The Religious Education Directorate's Catechist Service Team launched a newly developed Parish Religious Education Program, Gathered in My Name, as a resource for

Catechists in the Archdiocese of Perth teaching Religious Education to Catholic students who do not attend Catholic schools. The new resource is a comprehensive program for children from Pre-Primary to Year Six and includes modules on Jesus, Mary, Baptism, Confirmation, Penance, Eucharist, Church, and Scripture, among others. The new program will ensure the CEWA Catechist Service Team can support parish catechists in providing an updated Parish Religious Education Program.

# LEADiNg in 2016 continued...

## Engagement

We demonstrate commitment to our mission through positive relationships with all. Our call to engagement requires development of our people to lead in CEWA's mission.

### • NCEC Conference

The National Catholic Education Commission Conference, held once every five years, was hosted by the Most Reverend Timothy Costelloe SDB, Archbishop of Perth and Chair of the Bishops Commission for Catholic Education, and facilitated by CEWA in Perth in 2016. Themed 'Faith to Lead - Lead to Faith', the conference was attended by a record 1,400 educators, Church leaders, academics and policy makers. The conference included more than 45 presentations and workshops over three days, and provided interstate and international educators with opportunities to visit CEWA schools on learning tours. Keynote speakers included His Eminence Oscar Andres Rodriguez Maradiaga SDB, Archbishop of Honduras, and the Most Reverend Christopher Saunders, Bishop of Broome. Cardinal Maradiaga, himself an experienced educator, also visited students at St Norbert College in Queens Park.

### • CARE Schools

CARE schools are an intentional and strategic part of CEWA's commitment to serving the margins of society through the provision of education that supports each individual student to flourish. Research into the viability and need for new Curriculum And ReEngagement (CARE) schools was undertaken by CEWA staff in 2016, following the opening of St Francis' School in 2015 and the increased student intake in its second year. St Francis' School, along with St Clare's school, Clontarf Aboriginal College and the Geraldton Flexible Learning Centre, exist to re-engage vulnerable young people in learning. A paper was prepared for CECWA to consider proposals for a number of additional CARE schools to be opened as a priority of the next two to three years.

### • Aboriginal Employment Strategy

Building on prior research by staff in the School Improvement directorate and CEWA's Aboriginal Cadetship program, much work was done in 2016 to develop the inaugural Aboriginal Employment Strategy (AES) for the CEWA system, scheduled to be finalised and launched in 2017.

The AES will address CEWA's intent to increasingly become an employer that supports cultural competency development

for all staff, while attracting, retaining and investing in the professional learning of Aboriginal employees. The AES is intended to fulfil some of the required target actions outlined in the first Reconciliation Action Plan for CEWA offices, launched at the beginning of 2016.

### • Communications

Improving the means by which school and system news and success stories are communicated across the system was an area of significant work in the second half of the year. Late in the year the CEWA News website was launched to allow for more flexible and engaging content delivery.

### • Western Australian Young Achievers Awards & Knowledge Week

CEWA supported the Western Australian Young Achiever Awards, running for the first time in 2015/2016. The Awards publicly recognised outstanding personal achievements and community contributions from young people up to 29 years. CEWA sponsored the Young Leadership Award, which was presented with a financial prize to Ashlee Harrison, founder of the Zero2Hero youth mental health organisation.

CEWA also sponsored the inaugural Perth Knowledge Week, an event series celebrating learning and innovation, which

included a pop-up coding workshop for young people and lecture sessions on education.

## Accountability

We have personal and collective responsibility for our system's success. This success is made possible by inclusivity, good governance, and responsible, transparent resource allocation across the CEWA system.

### • Child Safety

To further strengthen CEWA's commitment to providing the safest learning environments possible, a Child Safety Framework was developed in 2016. A role was created to lead the project, and the framework was evaluated by the Australian Catholic University. Development of the Child Safety Framework reflected a more intentional and strategic approach to child safety, supporting CEWA schools and colleges to maintain environments where a culture of child safety is interwoven into every aspect of education. The framework will work alongside existing CEWA policies and government mandated child protection requirements.

### • Critical Incident Processes

The Community Engagement and Employee Services directorate focused on communicating critical incident processes with school

leadership and staff in 2016. A video was produced to raise awareness about critical incident classification and reporting, as well as introducing CEWA consultants who work with school staff to handle critical incidents. These consultants also ran a pop-up critical incident session at the July Leaders' Forum for school principals.

### • Strategic Planning and Cyclic Review

Ensuring that all Catholic schools and colleges had strategic plans for school improvement in place was a goal of CEWA in 2015. The majority of schools had planning processes in place by the end of that year, with CEWA's Strategic Planning Officer continuing to work through early 2016 with a number of schools to cement strategic planning as a system-wide standard practice. Documents were also developed to support school leadership in ongoing strategic planning, annual reporting and cyclic review processes.

### • Code of Conduct

CEWA's System Agreement with the Minister for Education was reviewed in 2016, according to schedule. The review included a requirement for each Catholic school to have a code of conduct in place. CEWA developed a template that could be tailored by each principal in consultation with their whole school community to form a code best

suited to their context. The code template provided a framework and language for respectful and healthy behaviour and relationships, and was intended to exceed compliance and support students to flourish.

### • Reconciliation Action Plan

After work began in 2014 on the first Reconciliation Action Plan (RAP) for CEWA offices, and the finalisation of the plan in 2015, the RAP was launched at the beginning of 2016. Minister for Education the Honourable Peter Collier, the Honourable Fred Chaney AO and Noongar Elder Dr Robert Isaacs attended the event and participated in the raising of new Australian, West Australian and Aboriginal flags as the first official action of the RAP. The RAP Governance Group met regularly through the year to ensure the implementation of the RAP, with new relationships being formed with relevant Aboriginal organisations and suppliers, and cultural initiatives being undertaken across CEWA offices for all staff to participate in.

# LEADing in 2016 continued...

## Discipleship

We are committed to deepening our relationship with Jesus. Our calling is to provide opportunities for all members of CEWA communities to grow personally in their faith.

### • Leadership Charter

CEWA engaged external education and leadership advisor, Philomena Billington, to help create a new Leadership Charter, which was near completion by the end of 2016. The Charter was written by a reference group and intended to assist CEWA in developing their staff and students in a climate of ongoing cultural, social, religious and technological change. The Charter will apply to staff at all levels of CEWA and will assist in using the LEAD strategic direction in the identification, formation, appointment and review of school and system leaders.

### • Transforming Lives: Strategy 2025

Throughout the year, the Aboriginal Education Team, with support of additional CEWA staff, began communicating the three 'bold goals' of *Transforming Lives: Strategy 2025*. The strategy outlines an approach to increasing engagement between Catholic schools and Aboriginal communities. The strategy's 'bold goals' are to:

- Double Aboriginal student enrolments from 2500 to 5000 in CEWA schools
- Double Year 12 graduation of Aboriginal CEWA students from 100 to 200
- Increase the percentage of Aboriginal CEWA students achieving above the national minimum literacy and numeracy standard, from 75% to 90%

### • Year of Mercy

The Extraordinary Jubilee of Mercy declared by Pope Francis began in late 2015, and ran through the 2016 school year. CEWA schools celebrated and reflected in a range of ways, including creating Mercy Doors and participating in pilgrimages.

The theme of God's mercy was a constant in system activities and communications throughout the Jubilee, and staff took extra opportunities to experience mercy through service.

### • Youth Summit

A planning team comprising of school leadership, CEWA personnel and staff from the University of Notre Dame Australia worked together to organise the Catholic Schools Youth Summit, which followed the NCEC Conference and carried on its theme of 'Faith to Lead, Lead to Faith'. The one-day summit was attended by more than 130 Year 10, 11 and 12 student leaders from both regional and metropolitan Catholic schools, with concurrent sessions discussing purpose, identity, and faith in action. The event was the first of its kind, and the enthusiastic participation from students prompted the planning team and University staff to begin planning for a repeat of the event in 2017.



# Appendix 1: Financial Summary 2016

Calendar Year - 12 months ended 31 December 2016 (Catholic Education Commission of WA)	Brought Forward \$'000	Income \$'000	Expenditure \$'000	Carried Forward \$'000
<b>Commonwealth Government Funding</b>				
AGRF Clearing	-	551,055	551,055	-
Indigenous Boarding Initiative	-	278	278	-
Additional CW SWD Funding	-	123	-	123
Community Detention Program	71	161	197	35
<b>Student First Support Funding and National Partnerships Teacher Quality Initiatives</b>				
National Partnerships - Teacher Quality				-
Early Career Teacher Support Program	101	344	426	19
Pop-up Innovation Studio	-	275	302	-27
Uniservices Reading Recovery Teacher Training	-	30	28	2
Community Engagement Capacity Building	-	50	-	50
E-recruitment Package	-	50	-	50
Insight SRC Contract	50	386	503	-67
Maddington Professional Development	7	2	9	-
Student First Support Fund Salary Recoveries	27	477	308	196
Experienced Principal Program	-7	100	131	-38
Instructional Leadership Initiative	37	600	561	76
Additional Audit Requirements	33	80	6	107
Research Fund	-39	80	42	
Board Chair Conference & Dinner	3	-	3	-
Aboriginal Teacher Assistant Program	18	165	130	53
Fogarty Foundation	24	-	14	10
Regional University Teacher Training Model	20	200	-	220
Online Production Project	93	-	-	93

Calendar Year - 12 months ended 31 December 2016 (Catholic Education Commission of WA)	Brought Forward \$'000	Income \$'000	Expenditure \$'000	Carried Forward \$'000
<b>State Government Funding</b>				
State Grant - State Per Capita	-	213,539	213,539	-
State Grant - Students with Disabilities	756	9,182	9,920	18
State Grant - Students with Disabilities High Support Needs	-	5,470	5,470	-
State Grant - System Initiatives	287	2,383	2,670	-
LOTE Community Languages	-	300	300	-
<b>Other Projects</b>				
NAPLAN / NULIT	-34	1,134	1,024	76
Vocational Education & Training Program	4	507	508	3
Engagement Programs 15-17 Year Olds	-	182	182	-
The Collaborative Project with Lyn Sharratt	99	178	140	137
Exemplary Educators Program	115	-	90	25
On Entry Assessment Project	81	38	95	24
Australian Early Development Census	13	-	-	13
MoneySmart Teaching	9	-	9	-
More Aboriginal and Torres Strait Islander Teachers Initiative (MATSITI)	27	-	-	27
Kimberley Success Zones (National Curriculum Services)	61	-	31	30
Cyber Safety Program	-	21	64	-43
Child Protection Project	-	81	-	81
Catholic Arts	49	500	458	91
Public Transport Authority - School Buses (West Kimberley)	49	98	135	12
NCEC National Conference 2016	-7	8	1	-

# CECWA Financial Summary 2016 continued...

Calendar Year - 12 months ended 31 December 2016 (Catholic Education Commission of WA)	Brought Forward \$'000	Income \$'000	Expenditure \$'000	Carried Forward \$'000
Catholic Education Network	1,630	11,960	12,938	652
Standardised School Administration System	426	2,557	2,280	703

## Other Projects

Religious Education Content Delivery Project	-731	1,525	794	-
Intranet Development	-472	472	-	-
Data Collection Tool Project	-32	87	55	-
ICT Service Centre	-32	423	391	-
MyHR Project	-31	534	390	113
Catechist Website Project	-15	49	34	-
LEADing Lights Transformation Program	-	-	1,386	-1,386

Calendar Year - 12 months ended 31 December 2016 (Catholic Education Commission of WA Trustees Inc)	Brought Forward \$'000	Income \$'000	Expenditure \$'000	Carried Forward \$'000
--	------------------------	---------------	--------------------	------------------------

## Commonwealth Government Funding

Capital Grants Program	1,450	8,082	8,458	1,074
Child Care Benefits Scheme	-	1,197	1,197	-
National Schools Chaplaincy Program	-	1,138	1,138	-

## Other Funding

Kimberley Reading Recovery Initiative	43	194	120	117
---------------------------------------	----	-----	-----	-----

Financial Year - 12 months ended 30 June 2016 (Catholic Education Commission of WA Trustees Inc)	Brought Forward \$'000	Income \$'000	Expenditure \$'000	Carried Forward \$'000
---	------------------------	---------------	--------------------	------------------------

## Commonwealth Government Funding

Job Creation - CDEP	784	-	-	784
Aboriginal Families as First Educators	1,250	1,258	927	1,581
Jobs Placement Program	1,175	1,182	2,070	287
Trade Training Centres	652	2,465	3,174	-57



Financial Year - 12 months ended 30 June 2016 (Catholic Education Commission of WA)	Brought Forward \$'000	Income \$'000	Expenditure \$'000	Carried Forward \$'000
<b>Commonwealth Government Funding</b>				
National Partnerships - Universal Access	1,462	6,440	2,916	4,986
National Partnerships - Improving Teacher Quality	-	108	108	-
National Partnerships - Reward for Great Teachers Initiative	608	-	240	368
<b>State Government Funding</b>				
Non Government School Psychology Service *	-99	2,679	2,532	48
Retention and Participation Program	83	588	579	92
Teacher Preparation for new WACE Grad Req	-	277	-	277
Quality Improvement in Early Childhood Education	25	-	10	15
Education Assistant Certificate III Program	19	-	-	19
<b>Other Funding</b>				
School Drug Education and Road Aware - National School Drug Education Strategy*	25	437	265	197
School Drug Education and Road Aware - Drug & Alcohol Office*	751	1,411	1,640	522
School Drug Education and Road Aware - Road Aware Project*	-	1,620	1,618	2
School Drug Education and Road Aware - Methamphetamine Initiative*	-	228	142	86
<b>Calendar Year - 12 months ended 31 December 2016 (Catholic Education of WA)</b>				
Catholic Education Commission of Western Australia	13,989	36,799	36,425	374
Catholic Schools (WA) Co-Responsibility Fund	21,083	17,096	15,952	1,144
Catholic Schools (WA) Long Service Leave Fund	26,093	32,778	29,318	3,460
Teacher Housing	0.453	8,719	8,719	-
<b>TOTAL</b>	<b>61,165.453</b>	<b>95,392</b>	<b>90,414</b>	<b>4,978</b>

# Appendix 2: Enrolments 2016

## Breakdown of CEWA Schools

Diocese	
Broome	13
Bunbury	26
Geraldton	11
Perth	113
<b>TOTAL</b>	<b>163</b>

Type of School	
Primary	114
Secondary	27
Composite	22
<b>TOTAL</b>	<b>163</b>

Co-educational	
Primary	114
Secondary	22
Composite	19
<b>TOTAL</b>	<b>155</b>

Kindergartens	
	<b>134</b>

Group Funded	
	<b>158</b>

Own Approved Authority	
	<b>5</b>

Girls	
Primary	0
Secondary	3
Composite	1
<b>TOTAL</b>	<b>4</b>

Boys	
Primary	0
Secondary	2
Composite	2
<b>TOTAL</b>	<b>4</b>

CARE School	
Co-educational	3
Female	1
Male	0
<b>Total</b>	<b>4</b>

## Enrolments by School

Diocese	Location	School Name		L	H	PP-Y12	K
Diocese	Location	School Name		L	H	PP-Y12	K
Broome	RINGER SOAK	BIRLIRR NGAWIYIWU CATHOLIC SCH	BG	KIN	Y06	34	3
Broome	DJARINDJIN LOMBADINA	CHRIST THE KING CATHOLIC SCHOOL	BG	KIN	Y10	54	8
Broome	DERBY	HOLY ROSARY SCHOOL	BG	PKG	Y06	130	19
Broome	MULAN	JOHN PUJAJANGKA-PIYIRN SCHOOL	BG	KIN	Y08	25	3
Broome	BILLILUNA	KURURRUNGKU CATHOLIC ED CTRE	BG	PKG	Y10	68	5
Broome	BALGO HILLS	LUURNPA CATHOLIC SCHOOL	BG	KIN	Y10	75	5
Broome	KUNUNURRA	NGALANGANGPUM SCHOOL	BG	KIN	Y10	81	11
Broome	BEAGLE BAY	SACRED HEART SCHOOL	BG	KIN	Y09	96	6
Broome	KUNUNURRA	ST JOSEPH'S SCHOOL	BG	KIN	Y06	114	17
Broome	WYNDHAM	ST JOSEPH'S SCHOOL	BG	KIN	Y06	39	7
Broome	BROOME	ST MARY'S COLLEGE	BG	KIN	Y12	611	60
Broome	GIBB RIVER	WANALIRRI CATHOLIC SCHOOL	BG	PKG	Y05	4	1
Broome	RED HILL	WARLAWURRU CATHOLIC SCHOOL	BG	PKG	Y06	63	5
Bunbury	MANDURAH	ASSUMPTION CATHOLIC PRIMARY SCH	BG	PKG	Y06	404	62
Bunbury	BUNBURY	BUNBURY CATHOLIC COLLEGE	BG	Y07	Y12	1370	0
Bunbury	MANJIMUP	KEARNAN COLLEGE	BG	KIN	Y12	432	25
Bunbury	AUSTRALIND	LESCHENAULT CATHOLIC PRI SCH	BG	PKG	Y06	405	58
Bunbury	MANDURAH	MANDURAH CATHOLIC COLLEGE	BG	KIN	Y12	1586	31
Bunbury	DARDANUP	OUR LADY OF LOURDES SCHOOL	BG	KIN	Y06	188	26
Bunbury	DUNSBOROUGH	OUR LADY OF THE CAPE PRI SCH	BG	KIN	Y06	223	52
Bunbury	ESPERANCE	OUR LADY STAR OF SEA CATH PS	BG	PKG	Y06	103	13
Bunbury	HARVEY	ST ANNE'S SCHOOL	BG	KIN	Y06	139	24
Bunbury	KOJONUP	ST BERNARD'S SCHOOL	BG	KIN	Y06	77	10
Bunbury	COLLIE	ST BRIGIDS SCHOOL	BG	PKG	Y06	154	21
Bunbury	BRIDGETOWN	ST BRIGID'S SCHOOL	BG	PKG	Y06	139	24
Bunbury	DAWESVILLE	ST DAMIEN'S CATHOLIC PRIMARY SCH	BG	PKG	Y06	401	59

# Enrolments 2016 continued...

Diocese	Location	School Name		L	H	PP-Y12	K
Bunbury	BUNBURY	ST JOSEPH'S CATHOLIC PRI SCH	BG	PKG	Y06	390	61
Bunbury	ALBANY	ST JOSEPH'S COLLEGE	BG	PKG	Y12	579	43
Bunbury	PEMBERTON	ST JOSEPH'S SCHOOL	BG	KIN	Y06	43	3
Bunbury	PINJARRA	ST JOSEPH'S SCHOOL	BG	PKG	Y06	184	35
Bunbury	WAROONA	ST JOSEPH'S SCHOOL	BG	KIN	Y06	136	14
Bunbury	BUSSELTON	ST MARY MACKILLOP COLLEGE	BG	KIN	Y12	1191	60
Bunbury	BUNBURY	ST MARY'S CATHOLIC PRIMARY SCH	BG	KIN	Y06	201	29
Bunbury	BOYUP BROOK	ST MARY'S SCHOOL	BG	KIN	Y06	75	8
Bunbury	DONNYBROOK	ST MARY'S SCHOOL	BG	KIN	Y06	129	16
Bunbury	NARROGIN	ST MATTHEW'S SCHOOL	BG	PKG	Y06	151	28
Bunbury	BRUNSWICK JUNCTION	ST MICHAEL'S CATHOLIC PRI SCH	BG	KIN	Y06	66	7
Bunbury	KATANNING	ST PATRICK'S SCHOOL-KATANNING	BG	KIN	Y06	120	23
Bunbury	MARGARET RIVER	ST THOMAS MORE CATHOLIC PRI SCH	BG	KIN	Y06	171	15
Geraldton	GERALDTON	GERALDTON FLEXIBLE LEARNING CENT	BG	Y07	Y12	83	0
Geraldton	GERALDTON	NAGLE CATHOLIC COLLEGE	BG	Y07	Y12	1227	0
Geraldton	MULLEWA	OUR LADY OF MOUNT CARMEL SCHOOL	BG	KIN	Y06	48	7
Geraldton	PORT HEDLAND	ST CECILIA'S CATHOLIC PRI SCHOOL	BG	KIN	Y06	177	29
Geraldton	GERALDTON	ST FRANCIS XAVIER PRIMARY SCH	BG	PKG	Y06	396	55
Geraldton	RANGEWAY	ST JOHN'S SCHOOL	BG	KIN	Y06	191	19
Geraldton	GERALDTON	ST LAWRENCE'S SCHOOL	BG	KIN	Y06	516	90
Geraldton	KARRATHA	ST LUKE'S COLLEGE	BG	Y07	Y12	376	0
Geraldton	CARNARVON	ST MARY STAR OF SEA CATH SCH	BG	PKG	Y10	300	18
Geraldton	NORTHAMPTON	ST MARY'S SCHOOL	BG	KIN	Y06	40	7
Geraldton	KARRATHA	ST PAUL'S PRIMARY SCHOOL	BG	KIN	Y06	368	56
Perth	SALTER POINT	AQUINAS COLLEGE	B	KIN	Y12	1318	24
Perth	LEEDERVILLE	ARANMORE CATHOLIC COLLEGE	BG	Y07	Y12	699	0
Perth	LEEDERVILLE	ARANMORE CATHOLIC PRIMARY SCH	BG	PKG	Y06	398	46

Diocese	Location	School Name		L	H	PP-Y12	K
Perth	BUTLER	BRIGHTON CATHOLIC PRIMARY SCH	BG	KIN	Y06	423	55
Perth	BINDOON	CATHOLIC AGRICULTURAL COLLEGE BI	BG	Y07	Y12	150	0
Perth	FREMANTLE	CBC FREMANTLE	B	Y07	Y12	849	0
Perth	BEDFORD	CHISHOLM CATHOLIC COLLEGE	BG	Y07	Y12	1703	0
Perth	BEACONSFIELD	CHRIST THE KING SCHOOL	BG	PKG	Y06	335	42
Perth	WATERFORD	CLONTARF ABORIGINAL COLLEGE	BG	Y07	Y12	166	0
Perth	BATEMAN	CORPUS CHRISTI COLLEGE	BG	Y07	Y12	1340	0
Perth	BEELIAR	EMMANUEL CATHOLIC COLLEGE	BG	Y07	Y12	947	0
Perth	CURRAMBINE	FRANCIS JORDAN CATHOLIC SCHOOL	BG	PKG	Y06	420	57
Perth	KELMSCOTT	GOOD SHEPHERD CATH PRIMARY SCHOO	BG	PKG	Y06	189	29
Perth	LOCKRIDGE	GOOD SHEPHERD CATHOLIC SCHOOL	BG	KIN	Y06	420	60
Perth	HAMMOND PARK	HAMMOND PARK CATHOLIC PRIMARY SC	BG	PKG	Y04	124	43
Perth	ELLENBROOK	HOLY CROSS COLLEGE	BG	PKG	Y12	714	57
Perth	DOUBLEVIEW	HOLY ROSARY SCHOOL	BG	PKG	Y06	404	55
Perth	CITY BEACH	HOLY SPIRIT SCHOOL	BG	PKG	Y06	191	27
Perth	MORLEY	INFANT JESUS SCHOOL	BG	PKG	Y06	425	59
Perth	MOSMAN PARK	IONA PRESENTATION COLLEGE	G	Y07	Y12	929	0
Perth	MOSMAN PARK	IONA PRIMARY SCHOOL	BG	KIN	Y06	269	18
Perth	BUTLER	IRENE MCCORMACK CATHOLIC COLL	BG	Y07	Y12	980	0
Perth	KALGOORLIE	JOHN PAUL COLLEGE	BG	Y07	Y12	724	0
Perth	MOUNT CLAREMONT	JOHN XXIII COLLEGE	BG	PKG	Y12	1432	50
Perth	ROCKINGHAM	KOLBE CATHOLIC COLLEGE	BG	Y07	Y12	1134	0
Perth	MIDDLE SWAN	LA SALLE COLLEGE	BG	Y07	Y12	1436	0
Perth	GREENWOOD	LIWARA CATHOLIC PRIMARY SCHOOL	BG	PKG	Y06	395	49
Perth	NEDLANDS	LORETO NEDLANDS	BG	PKG	Y06	185	25
Perth	MARTIN	LUMEN CHRISTI COLLEGE	BG	Y07	Y12	991	0
Perth	BALGA	MAJELLA CATHOLIC PRIMARY SCHOOL	BG	KIN	Y06	185	25
Perth	BALLAJURA	MARY MACKILLOP CATHOLIC COM SCH	BG	KIN	Y06	558	60

# Enrolments 2016 continued...

Diocese	Location	School Name		L	H	PP-Y12	K
Perth	GOOSEBERRY HILL	MARY'S MOUNT PRIMARY SCHOOL	BG	PKG	Y06	204	29
Perth	YANGEBUP	MATER CHRISTI CATHOLIC PRI SCH	BG	PKG	Y06	600	88
Perth	EDGEWATER	MATER DEI COLLEGE	BG	Y07	Y12	963	0
Perth	HIGH WYCOMBE	MATTHEW GIBNEY CATHOLIC PRI SCH	BG	KIN	Y06	194	24
Perth	LESMURDIE	MAZENOD COLLEGE	B	Y07	Y12	846	0
Perth	ATTADALE	MEL MARIA CATHOLIC PRIMARY SCH	BG	PKG	Y06	662	106
Perth	PERTH	MERCEDES COLLEGE	G	Y07	Y12	966	0
Perth	KOONDOOLA	MERCY COLLEGE	BG	KIN	Y12	1600	60
Perth	BALDIVIS	MOTHER TERESA CATHOLIC COLLEGE	BG	KIN	Y05	265	60
Perth	CHURCHLANDS	NEWMAN COLLEGE	BG	PKG	Y12	1757	86
Perth	CLOVERDALE	NOTRE DAME CATHOLIC PRIMARY SCHO	BG	PKG	Y06	391	55
Perth	WILLETTON	ORANA CATHOLIC SCHOOL	BG	PKG	Y06	374	59
Perth	PALMYRA	OUR LADY OF FATIMA SCHOOL	BG	PKG	Y06	202	30
Perth	KARRINYUP	OUR LADY OF GOOD COUNSEL SCHOOL	BG	PKG	Y06	201	27
Perth	NORTH BEACH	OUR LADY OF GRACE SCHOOL	BG	PKG	Y06	458	59
Perth	NOLLAMARA	OUR LADY OF LOURDES SCHOOL	BG	PKG	Y06	170	29
Perth	GIRRAWHEEN	OUR LADY OF MERCY PRIMARY SCH	BG	KIN	Y06	363	53
Perth	HILTON	OUR LADY OF MOUNT CARMEL SCHOOL	BG	PKG	Y06	203	24
Perth	DIANELLA	OUR LADY'S ASSUMPTION SCHOOL	BG	PKG	Y06	386	58
Perth	PADBURY	PADBURY CATHOLIC PRIMARY SCHOOL	BG	PKG	Y06	488	60
Perth	OCEAN REEF	PRENDIVILLE CATHOLIC COLLEGE	BG	Y07	Y12	1111	0
Perth	RIVERTON	QUEEN OF APOSTLES SCHOOL	BG	KIN	Y06	334	41
Perth	GOOMALLING	SACRED HEART CATHOLIC SCHOOL	BG	PKG	Y06	51	8
Perth	SORRENTO	SACRED HEART COLLEGE	BG	Y07	Y12	1398	0
Perth	HIGHGATE	SACRED HEART PRIMARY SCHOOL	BG	PKG	Y06	193	27
Perth	THORNLIE	SACRED HEART PRIMARY SCHOOL	BG	KIN	Y06	402	59
Perth	MUNDARING	SACRED HEART SCHOOL	BG	KIN	Y06	138	14
Perth	BYFORD	SALVADO CATHOLIC COLLEGE	BG	PKG	Y02	70	45
Perth	ST JAMES	SANTA CLARA SCHOOL	BG	KIN	Y06	156	29

Diocese	Location	School Name		L	H	PP-Y12	K
Perth	ATTADALE	SANTA MARIA COLLEGE	G	Y05	Y12	1236	0
Perth	TUART HILL	SERVITE COLLEGE	BG	Y07	Y12	1022	0
Perth	SAMSON	SETON CATHOLIC COLLEGE	BG	Y07	Y12	1052	0
Perth	CLARKSON	ST ANDREW'S CATHOLIC PRI SCH	BG	KIN	Y06	378	55
Perth	GREENMOUNT	ST ANTHONY'S SCHOOL	BG	PKG	Y06	420	59
Perth	WANNEROO	ST ANTHONY'S SCHOOL	BG	PKG	Y06	406	58
Perth	RIVERVALE	ST AUGUSTINE'S SCHOOL	BG	KIN	Y06	192	29
Perth	APPLECROSS	ST BENEDICT'S SCHOOL	BG	PKG	Y06	269	61
Perth	PORT KENNEDY	ST BERNADETTE'S CATH PRI SCH	BG	PKG	Y06	403	59
Perth	LESMURDIE	ST BRIGID'S COLLEGE	BG	PKG	Y12	1146	57
Perth	MIDDLE SWAN	ST BRIGID'S PRIMARY SCHOOL	BG	KIN	Y06	406	55
Perth	LATHLAIN	ST CLARE'S SCHOOL	G	Y08	Y12	35	0
Perth	BAYSWATER	ST COLUMBA'S PRIMARY SCHOOL	BG	PKG	Y06	352	60
Perth	SOUTH PERTH	ST COLUMBA'S SCHOOL	BG	PKG	Y06	236	57
Perth	JOONDANNA	ST DENIS SCHOOL	BG	PKG	Y06	189	30
Perth	INNALOO	ST DOMINIC'S SCHOOL	BG	KIN	Y06	156	29
Perth	HOCKING	ST ELIZABETH'S CATHOLIC PRIMARY	BG	KIN	Y01	37	21
Perth	CANNING VALE	ST EMILIE'S CATHOLIC PRI SCH	BG	KIN	Y06	400	57
Perth	MADDINGTON	ST FRANCIS' SCHOOL	BG	Y10	Y12	25	0
Perth	WESTMINSTER	ST GERARD'S PRIMARY SCHOOL	BG	PKG	Y06	154	29
Perth	ELLENBROOK	ST HELENA'S CATHOLIC PRI SCH	BG	PKG	Y06	481	59
Perth	MUNSTER	ST JEROME'S SCHOOL	BG	PKG	Y06	570	86
Perth	PIARA WATERS	ST JOHN BOSCO COLLEGE	BG	PKG	Y03	169	60
Perth	BANKSIA GROVE	ST JOHN PAUL II CATHOLIC PRIMARY	BG	KIN	Y06	322	49
Perth	SCARBOROUGH	ST JOHN'S SCHOOL	BG	PKG	Y06	191	28
Perth	BOULDER	ST JOSEPH'S SCHOOL	BG	PKG	Y06	166	28
Perth	MOORA	ST JOSEPH'S SCHOOL	BG	KIN	Y06	150	20
Perth	NORTHAM	ST JOSEPH'S SCHOOL	BG	PKG	Y11	543	56

# Enrolments 2016 continued...

Diocese	Location	School Name		L	H	PP-Y12	K
Perth	QUEENS PARK	ST JOSEPH'S SCHOOL	BG	PKG	Y06	423	60
Perth	SOUTHERN CROSS	ST JOSEPH'S SCHOOL	BG	PKG	Y06	17	3
Perth	LANGFORD	ST JUDE'S CATHOLIC SCHOOL	BG	PKG	Y06	173	27
Perth	TUART HILL	ST KIERAN CATHOLIC PRIMARY SCH	BG	PKG	Y06	428	52
Perth	BALCATT	ST LAWRENCE PRIMARY SCHOOL	BG	PKG	Y06	208	30
Perth	WOODVALE	ST LUKE'S CATHOLIC PRI SCH	BG	KIN	Y06	398	58
Perth	REDCLIFFE	ST MARIA GORETTIS CATHOLIC SCH	BG	KIN	Y06	230	46
Perth	KALGOORLIE	ST MARY'S PRIMARY SCHOOL	BG	KIN	Y06	404	59
Perth	MERREDIN	ST MARY'S SCHOOL	BG	PKG	Y06	162	23
Perth	BASSEDEAN	ST MICHAEL'S SCHOOL	BG	KIN	Y06	216	29
Perth	GOSNELLS	ST MUNCHIN'S SCHOOL	BG	KIN	Y06	355	50
Perth	QUEENS PARK	ST NORBERT COLLEGE	BG	Y07	Y12	890	0
Perth	FREMANTLE	ST PATRICK'S SCHOOL	BG	PKG	Y06	189	22
Perth	MOUNT LAWLEY	ST PAUL'S PRIMARY SCHOOL	BG	PKG	Y06	176	28
Perth	INGLEWOOD	ST PETER'S PRIMARY SCHOOL	BG	KIN	Y06	615	91
Perth	MANNING	ST PIUS X SCHOOL	BG	KIN	Y06	184	28
Perth	OCEAN REEF	ST SIMON PETER CATHOLIC PRI SCH	BG	PKG	Y06	626	87
Perth	CLAREMONT	ST THOMAS' PRIMARY SCHOOL	BG	PKG	Y06	194	30
Perth	PARMELIA	ST VINCENT'S SCHOOL	BG	KIN	Y06	379	60
Perth	ROCKINGHAM	STAR OF THE SEA PRIMARY SCHOOL	BG	PKG	Y06	613	89
Perth	EAST PERTH	TRINITY COLLEGE	B	Y04	Y12	1324	0
Perth	VICTORIA PARK	URSULA FRAYNE CATHOLIC COLLEGE	BG	KIN	Y12	1308	60
Perth	CRAIGIE	WHITFORD CATHOLIC PRI SCH	BG	PKG	Y06	528	90
Perth	HILBERT	XAVIER CATHOLIC SCHOOL	BG	PKG	Y06	309	45
Perth	BATEMAN	YIDARRA CATHOLIC PRIMARY SCHOOL	BG	PKG	Y06	448	56

	Kindergarten			Primary (PP-Y6)			Secondary (Y7-Y12)			Combined
	Boys	Girls	Total	Boys	Girls	Total	Boys	Girls	Total	Total
<b>2016</b>	2,565	2,514	5,079	18,498	18,396	36,894	17,639	17,548	35,187	77,160



TYPE	Boys	Girls	Total
<b>ALL schools</b>			
K	2565	2514	5079
Primary (PP-6)	18498	18396	36894
Secondary	17639	17548	35187
<b>TOTAL</b>	<b>38702</b>	<b>38458</b>	<b>77160</b>
<b>Broome</b>			
K	79	55	134
Primary (PP-6)	547	535	1082
Secondary	167	192	359
<b>TOTAL</b>	<b>793</b>	<b>782</b>	<b>1575</b>
<b>Bunbury</b>			
K	337	330	667
Primary (PP-6)	2637	2636	5273
Secondary	1912	2025	3937
<b>TOTAL</b>	<b>4886</b>	<b>4991</b>	<b>9877</b>
<b>Geraldton</b>			
K	135	124	259
Primary (PP-6)	935	954	1889
Secondary	882	955	1837
<b>TOTAL</b>	<b>1952</b>	<b>2033</b>	<b>3985</b>

# Enrolments 2016 continued...

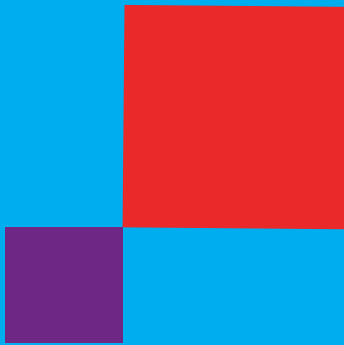
TYPE	Boys	Girls	Total
<b>Perth</b>			
K	2014	2005	4019
Primary (PP-6)	14379	14271	28650
Secondary	14678	14376	29054
<b>TOTAL</b>	<b>31071</b>	<b>30652</b>	<b>61723</b>

<b>Group Funded</b>			
K	2552	2490	5042
Primary (PP-6)	18316	17956	36272
Secondary	16224	14432	30656
<b>TOTAL</b>	<b>37092</b>	<b>34878</b>	<b>71970</b>

<b>Own Approved Authority</b>			
K	13	24	37
Primary (PP-6)	182	440	622
Secondary	1415	3116	4531
<b>TOTAL</b>	<b>1610</b>	<b>3580</b>	<b>5190</b>

<b>CARE schools</b>			
K	0	0	0
Primary (PP-6)	0	0	0
Secondary	178	168	346
<b>TOTAL</b>	<b>178</b>	<b>168</b>	<b>346</b>





**CATHOLIC EDUCATION**  
WESTERN AUSTRALIA